



Declaration acc. EN 12620

07



Farvervej 1
DK-8800 Viborg
CVR-nr. 29010331
www.bgstone.dk

Place of production: Brekke Stenbrud, 1745 Halden, Norway
Producer: BG Stone A/S, Farvervej 1, 8800 Viborg
Description material: 16/32 mm Crushed Granite Aggregate E
Exposure classes XD2, XD3, XS3, XF4, XA3
Description produktion: Blasted, crushed and sorted by screening

Validity: 12 May 2026
Replacement for: 9 July 2025
Declarations number: CB704173
Item No.: 10173
Certificate number.: 1505-CPR-CB704

Properties in accordance with EN 12620

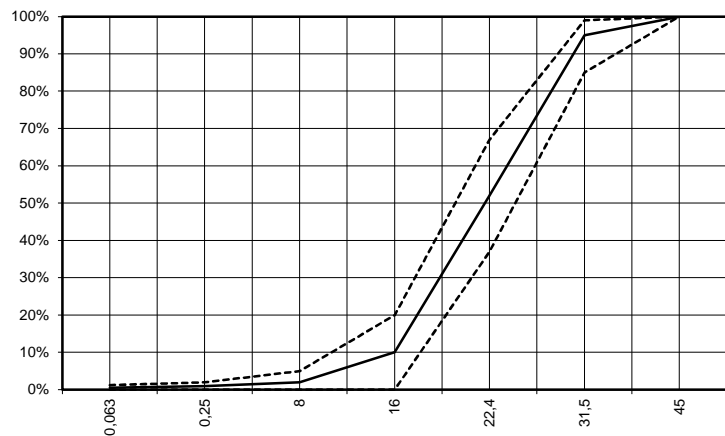
Test method	Min.	Max.	Average	Particle size	16/32
EN 1744-1 Acids soluble sulphate		0,20%	0,071%	Grading	Gc85/20
EN 1744-1 Total sulfur		1,00%	0,015%	Fines content	f _{1,5}
EN 1367-4 Drying shrinkage		0,075%	0,021%	Particle density, Mg/m ³ , ρ _{ssd}	2,64
EN 1097-6 Particle density, Mg/m ³ , _{ssd}	2,62	2,66	2,64	Composition/contents	
EN 1097-6 Water absorption	0,1%	0,4%	0,2%	Acid-soluble sulphate	AS _{0,2}
EN 1367-1 Freeze/thaw		1	0,2%	Total sulfur	0,015%
EN 1097-2 Resistance to fragmentation		35	33	Volumstability	
				Drying shrinkage	0,021% WS
EN 932-3 Petrography	Monzo Granite		99,5%	Resistance to freeze/thaw	F ₁
EN 932-3 Petrography	Pegmatite		0,5%	Resistance to fragmentation	LA ₃₅

Properties in accordance with DS 206: 2025 Annex E / Ret. 1 : 2026

Test method	Min.	Max.	Average	Resistance against Alkali-Silica reactivity	0,023%
ASTM C1260 Accelerated Mortar-Bar Method		0,10%	0,023%	Composition/contents	
Quantab Chloride content		0,010%	<0,003%	Water absorption	WA ₂₄ 0,2
Calculated Eq. content of alkali		0,009%	<0,003%	Chlorides	< 0,010% Cl

EN 933-1 Particle size distribution

Sigte	Min.	Middel	Max.
45	100%	100%	100%
31,5	85%	95%	99%
22,4	37%	52%	67%
16	0%	10%	20%
8	0%	2%	5%
0,25	0,0%	0,9%	2,0%
0,063	0,0%	0,5%	1,2%



Attestation of constancy of performance



FPC Certifikat, 1505-CPR-CB704, iht. EN 12620 + A1: 2008
Produktcertifikat CB704, iht. DS 206 : 2025 Annex E / Ret. 1 : 2026

Regnar Bjerre, Quality Manager
Tel.: +45 6012 8822
Email: regnar.bjerre@bgstone.dk

This declaration refers to: DoP No.: Crushed Granite Aggregates 10.16-A 12.05.2026