



Declaration acc. DS/EN 12620



Fabrikvej 12
DK-8800 Viborg
CVR-nr. 29010331
www.bgstone.dk

1505

07

Place of production: Brekke Stenbrud, 1745 Halden, Norway
Producer: BG Stone A/S, Fabrikvej 12, 8800 Viborg
Description material: 4/16 mm E Granite aggregate
Exposure classes: XD2, XD3, XS3, XF4, XA3
Description production: Blasted, crushed and sorted by screening

Valid from: 13 July 2023
Replaces: 23 May 2019
Declarations number: CB704166
Item No.: 10166
Certificate number.: 1505-CPR-CB704

Properties in accordance with EN 12620

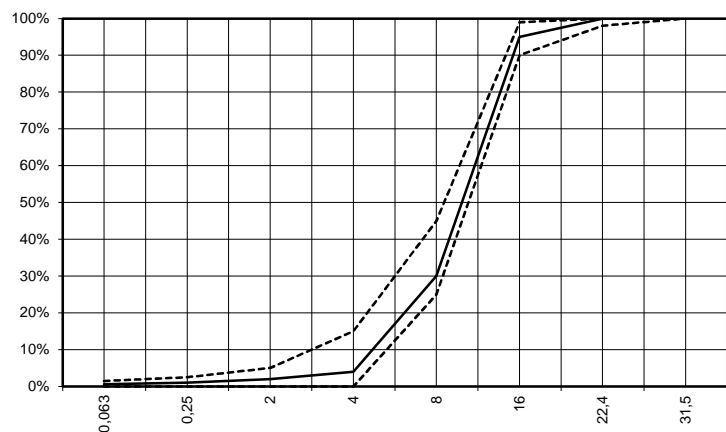
| Test method | Min. | Max. | Average | Particle size | 4/16 | | |
|-------------|---|---------------|---------|---------------------------|---|-----------------------|-------------------|
| EN 1744-1 | Acids soluble sulphate | 0,20% | 0,067% | Grading | Gc90/15 | | |
| EN 1744-1 | Total sulfur | 1,00% | 0,04% | Fines content | f ₁₅ | | |
| EN 1367-4 | Drying shrinkage | 0,075% | 0,041% | Grading mid-size | G _T 17,5 | | |
| EN 1097-6 | Particle density, Mg/m ³ , ssd | 2,62 | 2,66 | 2,63 | Particle density, Mg/m ³ , ssd | 2,63 | |
| EN 1097-6 | Water absorption | 0,1% | 0,4% | 0,3% | Composition/contents | Acid-soluble sulphate | AS _{0,2} |
| EN 1367-1 | Freeze/thaw | 1 | 0,1% | Total sulfur | 0,04% | | |
| | | | | Volumstability | | | |
| | | | | Drying shrinkage | 0,041% WS | | |
| EN 932-3 | Petrography | Monzo granite | 99,5% | Resistance to freeze/thaw | F ₁ | | |
| EN 932-3 | Petrography | Pegmatite | 0,5% | | | | |

Properties in accordance with EN 12620 and DS/EN 206 DK NA: Annex E

| Test method | Min. | Max. | Average | Resistance against Alkali-Silica reactivity | 0,03% |
|-------------|-------------------------------|--------|---------|---|-----------------------|
| ASTM C1260 | Accelerated Mortar-Bar Method | 0,10% | 0,03% | Composition/contents | WA ₂₄ 0,3% |
| Quantab | Chloride content | 0,010% | 0,000% | Chlorides | < 0,003% Cl |
| Calculated | Eq. Content of alkali | 0,009% | 0,000% | | |

EN 933-1 Particle size distribution

| Sieve | Min. | average | Max. |
|-------|------|---------|------|
| 31,5 | 100% | 100% | 100% |
| 22,4 | 98% | 100% | 100% |
| 16 | 90% | 95% | 99% |
| 8 | 25% | 30% | 45% |
| 4 | 0% | 4% | 15% |
| 2 | 0% | 2% | 5% |
| 0,25 | 0,0% | 1,0% | 2,5% |
| 0,063 | 0,0% | 0,6% | 1,5% |



Attestation of the constancy of performance



FPC Certificate, 1505-CPR-CB704, iht. EN 12620 + A1: 2008

Regnar Bjerre

Regnar Bjerre, Quality Manager
Tel.: +45 6012 8822
Email: regnar.bjerre@bgstone.dk